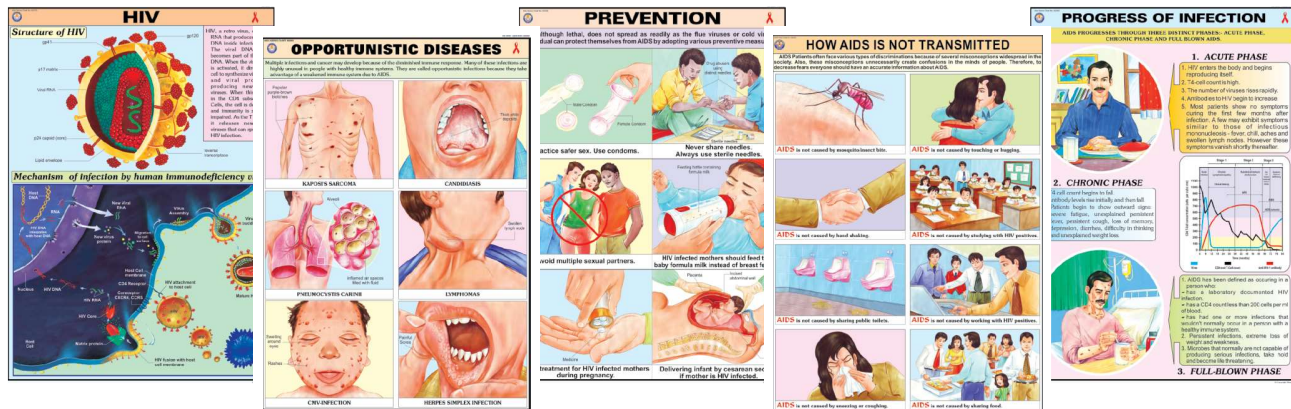


# Charts On Aids

Each Chart Size 70 x 100 cm.

Rigid lamination on board with aluminium frame  
Printed on Synthetic paper and fitted with plastic rollers



- AS01S HIV:** showing structure and mechanism of infection of Human Immunodeficiency Virus
- AS02S Transmission of HIV:** explaining different ways which can spread the HIV infection and cause AIDS.
- AS03S Prevention:** showing various measures which, when adopted, prevent transmission of HIV infection.
- AS04S How AIDS is not Transmitted:** showing various routine tasks which are not involved in transmission of HIV.
- AS05S Progress of Infection:** showing how HIV infection typically progresses through various stages.
- AS06S Opportunistic Diseases:** depicting complications which an AIDS patient develops that otherwise wouldn't normally occur in a person with a healthy immune system.
- AS07S Sexually Transmitted Diseases:** showing various sexually transmitted diseases which increase the chances of acquiring HIV infection by an individual when exposed to the virus.
- HP26S Human Immune System:** showing different organs involved in a healthy immune mechanism. As AIDS progressively weakens the immune system, chart gives an outline of functions of Immune System to better understand what AIDS can do.

# Lab Display Charts



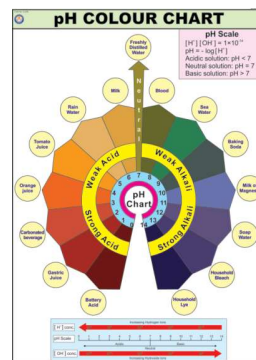
LABORATORY SAFETY

Showing basic safety measures to be followed while working in a chemistry laboratory. Printed on Polyart Synthetic Paper. Size 70 x 100 cm. Code CL01S



LABORATORY TECHNIQUES

Showing various procedures and techniques generally used in a chemistry laboratory. Printed on Polyart Synthetic Paper. Size 70 x 100 cm. Code CL02S



pH COLOUR CHART

Reference colours indicated by universal indicator with different acidic or basic substances to show their approximate pH values. Printed on Polyart Synthetic Paper. Size 70 x 100 cm. Code CL03S



LABORATORY FIRST AID

Showing various first aid techniques and procedures used during an accident in a Laboratory. Printed on Polyart Synthetic Paper. Size 70 x 100 cm. Code CL04S