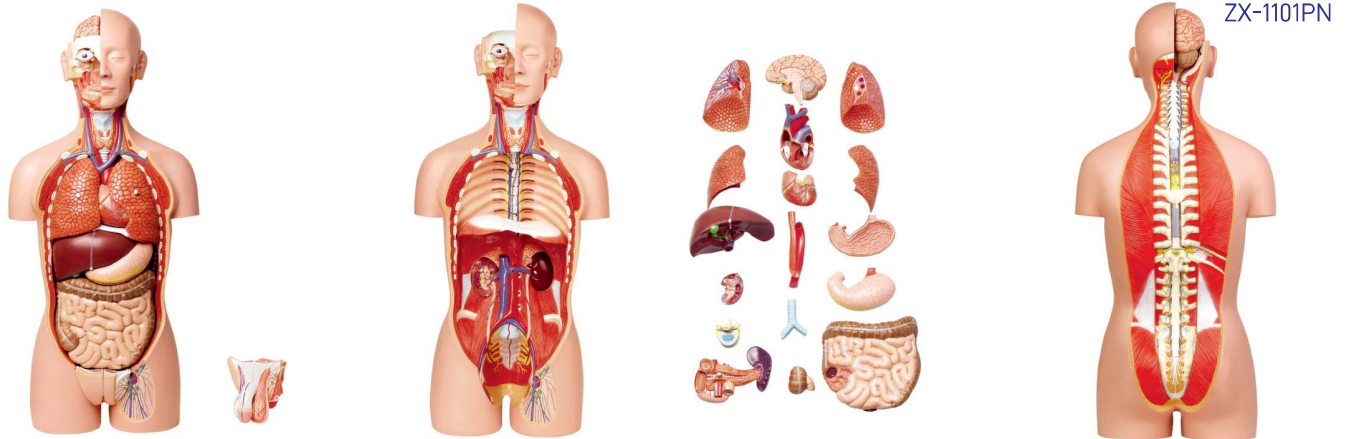
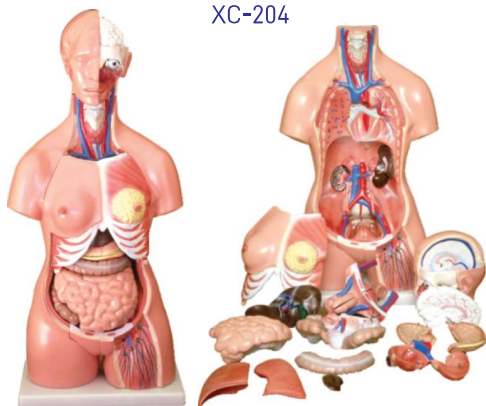


## HUMAN TORSO MODEL

ZX-1101PN Human Torso Deluxe 85 cm. 27 Parts 2-in-1



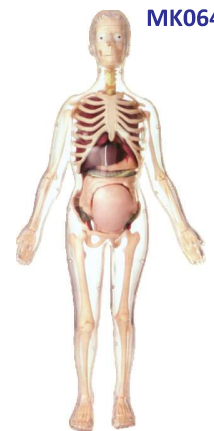
- 85 cm
- Made of PVC
- Dissectable in 27 parts.
- 2-in-1 with removable interchangeable male and female genitalia.
- The mouth cavity and nasal cavity is open to show the inlet of digestive and respiratory system.
- The head is open so that the cerebrum with cerebellum can be taken out for close observation.
- With the removable male and female reproductive organ, and removable half kidney, the whole urinary system and reproductive system are well depicted.
- The lung can be completely removed, and the important structures on the inner wall of thoracic cavity like sympathetic column, azygos vein, hemiazygos vein, thoracic duct are well shown.
- It is most characterized by its open neck & back, which provide a full view of the nervous system, the brain & the whole spinal cord.
- The 12th thoracic vertebra can be taken out for close observation of vertebrae, spinal cord, spinal nerves and 3 layers of maters.
- Key card / Manual provided.



XC-204

### XC-204 Unisex Torso 23 parts 85 cm

- Size: 33.5" tall (85cm), Made of PVC plastic.
- Features an exposed spine with removable vertebra and spinal cord segments.
- Interchangeable male and female genitalia.
- The female organs include a fetus in the womb.
- Dissectible into 23 parts: torso, female breast plate, head, eyeball, brain, vertebra spinal nerves, lung (2 parts), heart (2 parts), liver, kidney, stomach (2 parts), intestines (4 parts), male genitalia (2 parts), female genitalia with fetus (3 parts).
- Mounted on a plastic base.



MK064

### MK064 Visible Expectant Mother Anatomy Kit

- Size: 55cm.
- Dissectable in 48 pieces. Detailed instruction manual included.
- This visible anatomy model realistically shows the important parts of human body. Learn how body works by taking the model apart and see how the different organs work together to keep us alive and healthy.



### ZX-1103P Human Torso Small

- 28 cm tall
- Sexless
- Made of PVC
- Dissectable in 15 parts - trunk, brain(2), heart, esophagus & aorta, lung(4), skull cover, stomach, diaphragm, liver, pancreas & spleen, & intestines.
- Mounted on a base.
- Key card / Manual provided.



ZX-1100E

### ZX-1100E Human Torso Small (23 parts)

- 46x24x12.5 cm.
- Interchangeable male & female genitalia.
- Mounted on a base.
- 74 features marked.
- Key card / Manual provided.