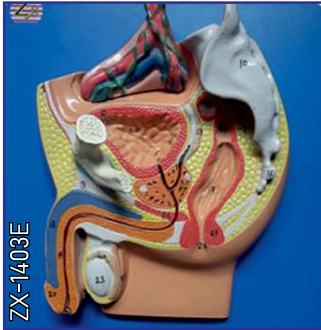
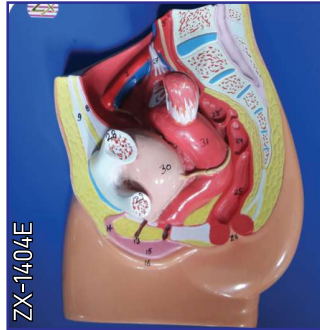


REPRODUCTIVE SYSTEM



ZX-1403E Male Pelvis Small (Magnetic)

- 25x25x8 cm. • Made of HSP resin
- Model is in 3 parts.
- Median section model shows male genital organs in normal position.
- Model is mounted on board.
- 36 features marked.
- Key card / Manual provided.



ZX-1404E Female Pelvis Small (Magnetic)

- 25x25x8 cm. • Made of HSP resin
- Model is in 2 parts.
- Median section model shows female genital organs in normal position.
- Model is mounted on board.
- 31 features marked.
- Key card / Manual provided.



ZX-1445P Female Pelvic Anatomy Model

- Size: 18x14x14.5 cm.
- Model is showing anatomy of median sagittal section of the female pelvis.
- Suitable for pharmaceutical promotion.
- Mounted on base.
- Key card / Manual provided.

XC-429 Female Internal & External Genital Organs

XC-429



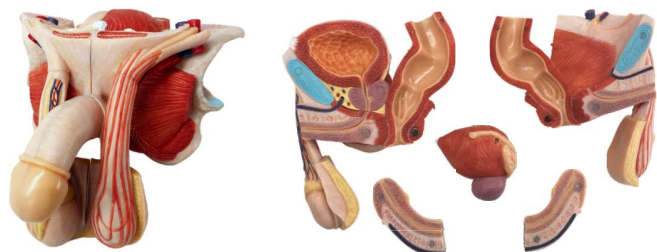
- It shows the female genital organs including uterus, uterus appendix (fallopian tube, ovary and its membrane, ligament teres uteri, ligament ovary proprium), vagina and the structure of external genital organ.
- Part of uterus & vagina are dissected to show its internal structures. Size: life-size.

GD/F5N IUD Training Simulator

GD/F5N



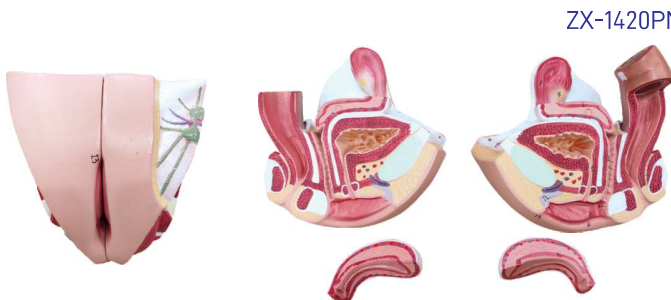
- Basing on real anatomy of female genitalia, we designed this model for instructing or training of insertion or removal IUD.
- The uterus is in coronal section and covered with transparent plastic window. So students can directly observe whole insertion or removal process.



ZX-1419PN

ZX-1419PN Male Genital Organs Model Dissectable

- Size: Life size • Made of PVC • Dissectable in 5 parts
- This model is medially sectioned.
- The model shows penis, prostate, bladder, seminal vesicle, spermatic cord, inguinal canal and testicles.
- 23 features marked. • Key card / Manual provided.



ZX-1420PN

ZX-1420PN Female Genital Organs Model Dissectable

- Size: Life size • Made of PVC • Dissectable in 4 parts
- This model is medially sectioned.
- Removable parts include a two-part Uterus and two halves of the Female Reproductive System with details of the internal structure.
- 13 features marked. • Key card / Manual provided.